



LICENSED CHILD CARE SUPPLY

In California more than 11,200 center-based programs and 30,700 family child care homes are licensed to serve over 1 million children ages birth to 12 years. Yet this supply is only available for 25 percent of children with working parents¹. Since 2008, we have seen the supply shrink year after year. If trends continue, options available for working families will be even more limited.

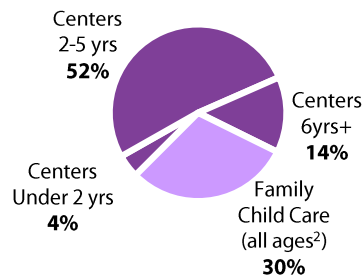


Licensed Child Care

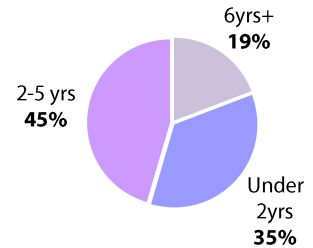
A majority of center-based programs are licensed to serve children 2-5 years. Only 4% of spaces are dedicated to infants.

Family child care homes represent a third of the supply, and are more likely to care for infants and toddlers and offer full-time and flexible hours of care².

Percentage of Licensed Spaces by Type of Care

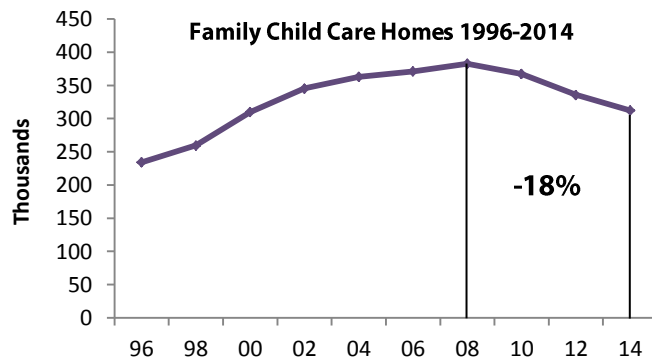
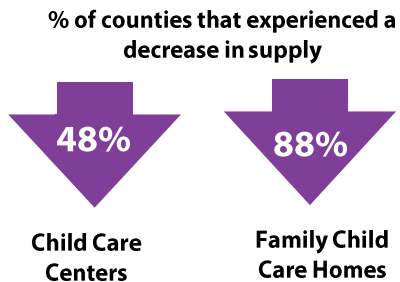


Percentage of Care Requests by Age

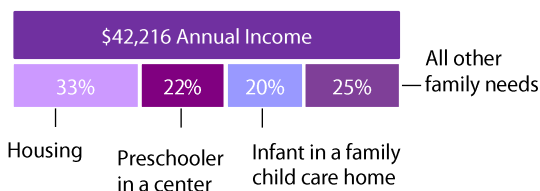


Changes in Supply

Between 2008 and 2014, a large portion of California's counties have experienced a decrease in the number of licensed child care spaces. Family child care homes in particular were severely impacted during the Great Recession and have had a slow recovery since.



Maximum Income to Qualify for a Child Care Subsidy Family of 3



High Cost of Care

Families across California struggle to afford care. Child Care Aware of America ranked California the 3rd least-affordable state for center-based infant care. Those that cannot access a subsidy will pay close to half of their income on licensed care.